

**Contact details:**

Name: \_\_\_\_\_

Address: \_\_\_\_\_

Tel: \_\_\_\_\_

E mail: \_\_\_\_\_

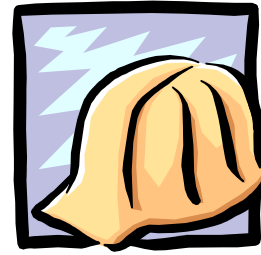
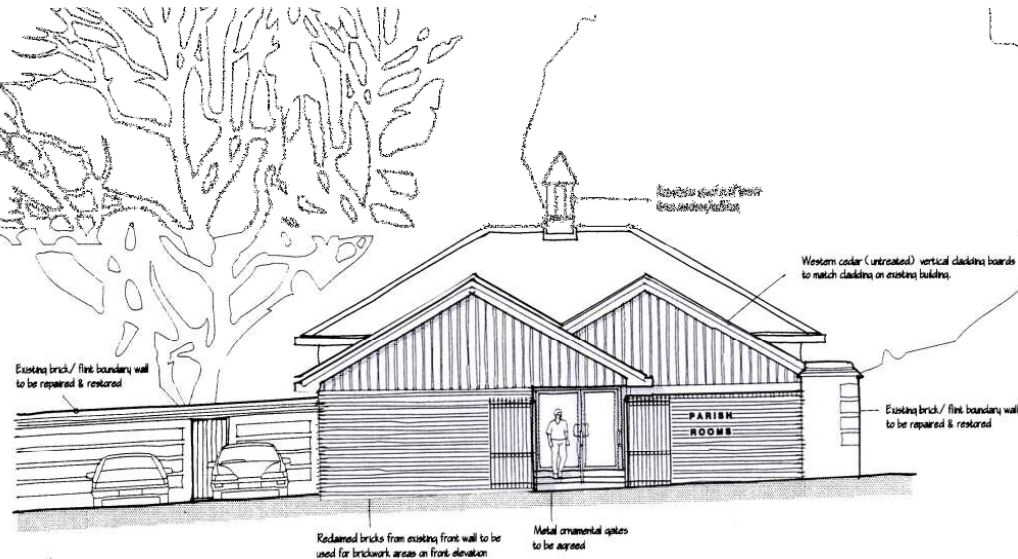
*The Blandford Parish Church Council thank for your generosity and support.*

*Please return this form in the enclosed envelope to:*



The Treasurer  
Hall Steering Group  
Blandford Parish Church  
The Market Square  
Blandford Forum,  
Dorset DT117AF

*For more information about the Blandford Parish Centre Project please phone 01258 456260 or email [hall@bfpc.org.uk](mailto:hall@bfpc.org.uk) or see the website [www.bfpc.org.uk](http://www.bfpc.org.uk).*



**Sponsor a Plank  
on the new**



# Blandford Parish Centre

**We are pleased to invite you to share in Blandford Church's Parish Centre project.**

We are providing a modern, purpose-built and sustainable building in the centre of the town to be used and enjoyed by all sectors in the community. We hope it will improve the social, economic and environmental well being of the town.

**From this ...**



**To this ...**

## The New Blandford Parish Centre ....

**Where is it?** In the centre of Blandford, the Tabernacle, opposite the Post Office and Library.

**When will it be built?** The Centre should be available by February 2010.

**What does it offer?** A large hall, which seats up to 100 people, or 60 at tables. Two meeting rooms, one comfortable lounge style, one Boardroom style, seating up to 20 people in each. All rooms offer high quality IT and Audio Visual facilities and Garden access. A fully equipped modern kitchen and toilet facilities are available on all bookings. The Centre is on one level and is fully accessible to all users. The space can be used flexibly to accommodate group needs. The building has been designed and built to demonstrate sound environmental principles.

**Who is it for?** The vision behind the project is to build “A place where Church and Community meet”. In practice, this means individuals, businesses and both Church and community groups. The facilities will be suitable for training, conference and business purposes as well as social activities for all ages. We have already had interest in monthly film shows, youth activities, a toddler club, the showing of high profile sporting events, dance and exercise classes, art and trade events, Clubs (e.g. bridge, chess), Girl Guides, Brownies and Rainbows. It will offer a fine location for wedding receptions and other social events, and we hope to provide a place where the most lonely in our community could meet and chat at times e.g. the elderly and homeless.

The Centre will cost an estimated £550,000 and friends of Blandford Parish Church Long have raised around £515,000, leaving an estimated shortfall of £35,000 (as of September 2009).

**CAN YOU HELP BY SPONSORING A CEDAR PLANK?**

## Sponsoring a Plank - £75

The planks are for the outside walls of the Centre and are fully visible from the road. The planks made up from cedar wood from a sustainable source. Sponsorship will be recognised on a ‘wall of fame’ at the entrance to the Parish Centre. This also offers an opportunity to remember a person or special occasion. All sponsors will be invited to one of the open days when the Centre is completed

- I/We\* would like to sponsor ..... (insert number) of planks
- I/We\* enclose a cheque for £ .....00 (cheques made payable to Blandford Parish Church.
- If you are a UK taxpayer - your gift can be increased by 25% through the Gift Aid Scheme. Please tick the box to show your approval for the church to claim Gift Aid
- I/We\* would like my sponsorship to be recognised on the “Wall of Fame” board as follows: -  
Personal Name \_\_\_\_\_  
Business Name \_\_\_\_\_  
In Memory of \_\_\_\_\_
- No recognition required please tick
- I’d like to talk to you about my contribution to the Parish Centre
- I’d like more information about the Parish Centre project.
- I may be interested in booking the Centre in the future.

\* Delete as appropriate